

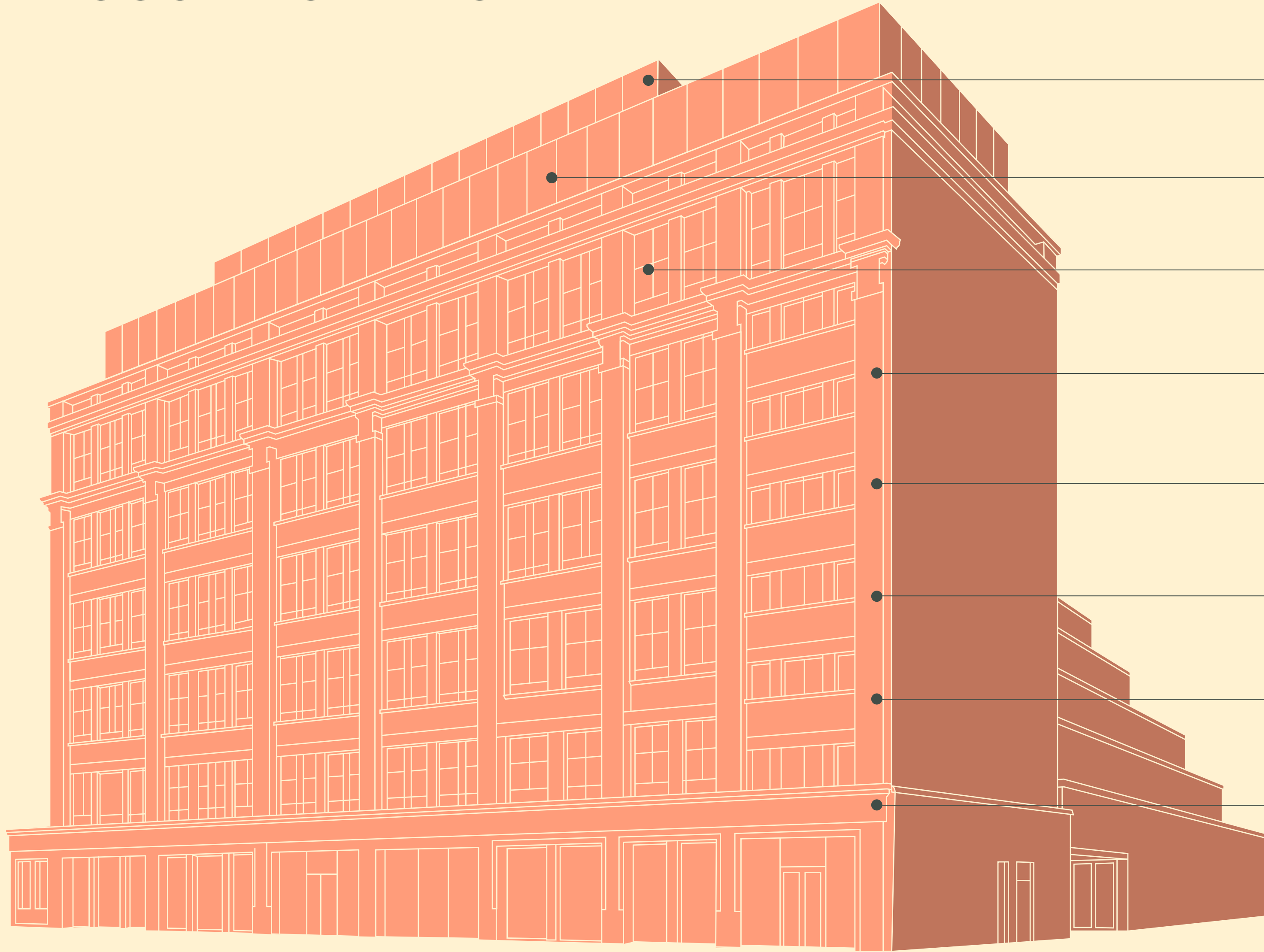
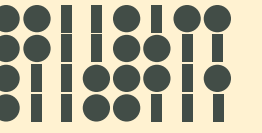
# SYSTEMS

BROOK GREEN

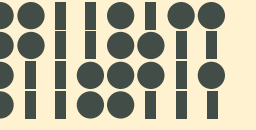


FLOOR PLANS

# ACCOMMODATION



		<span style="color: green;">●</span> Terrace <span style="color: red;">●</span> Amenity	NIA
<a href="#">VIEW FLOOR</a>	PAVILION	<span style="background-color: #4CAF50; color: white; border-radius: 10px; padding: 2px 5px;">1,493 SQ FT</span>	1,525 SQ FT 141.7 SQ M
<a href="#">VIEW FLOOR</a>	SIXTH		11,115 SQ FT 1,032.6 SQ M
<a href="#">VIEW FLOOR</a>	FIFTH	<span style="background-color: #4CAF50; color: white; border-radius: 10px; padding: 2px 5px;">565 SQ FT</span>	12,108 SQ FT 1,124.9 SQ M
<a href="#">VIEW FLOOR</a>	FOURTH		16,885 SQ FT 1,568.7 SQ M
<a href="#">VIEW FLOOR</a>	THIRD		18,267 SQ FT 1,697.1 SQ M
<a href="#">VIEW FLOOR</a>	SECOND		20,094 SQ FT 1,866.8 SQ M
<a href="#">VIEW FLOOR</a>	FIRST		21,583 SQ FT 2,005.1 SQ M
<a href="#">VIEW FLOOR</a>	GROUND	<span style="background-color: #F44336; color: white; border-radius: 10px; padding: 2px 5px;">1,507 SQ FT</span>	13,132 SQ FT 1,220.0 sq m
<a href="#">VIEW FLOOR</a>	LOWER GROUND		
	<b>TOTAL</b>		<b>126,086 SQ FT</b> 11,714 SQ M



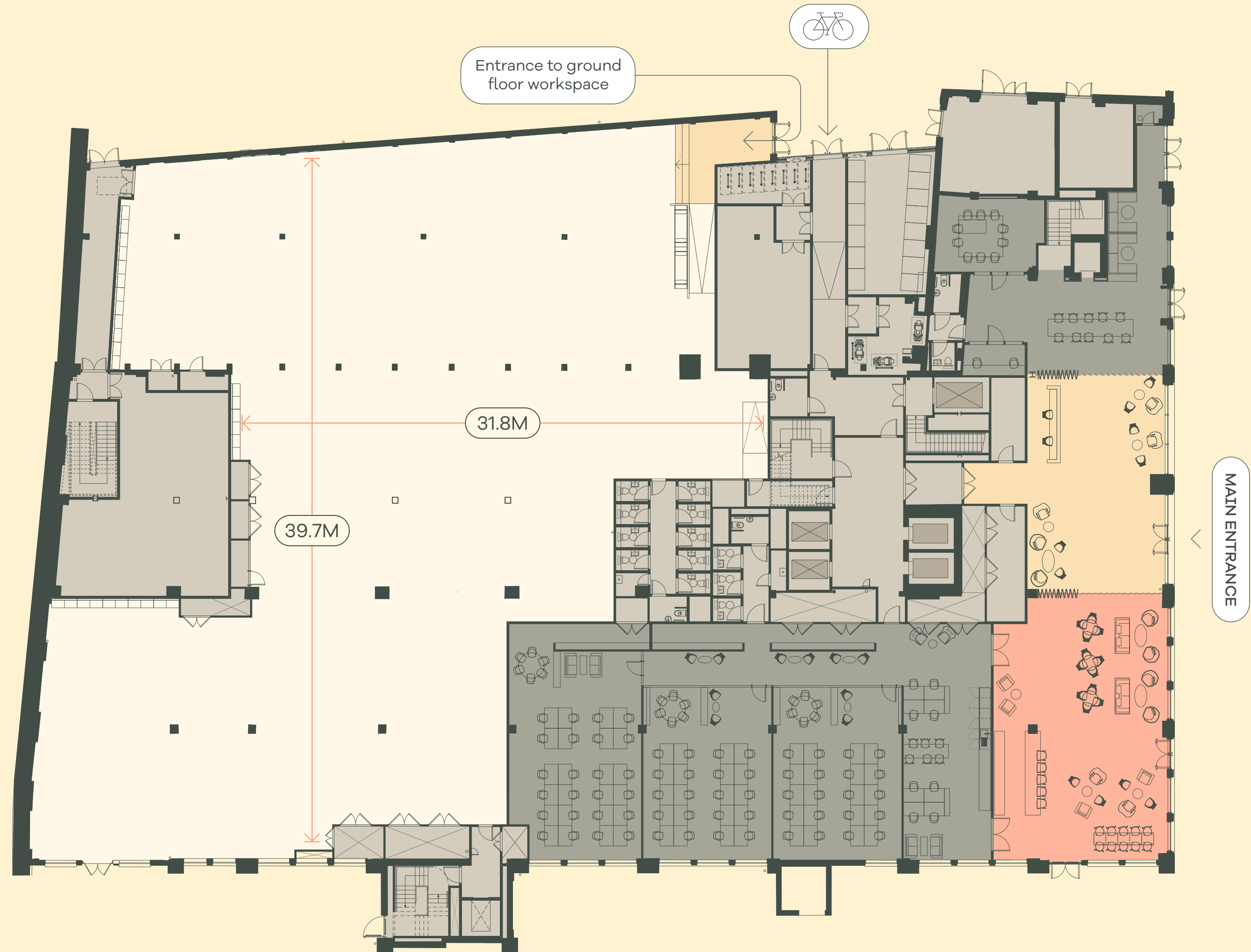
# GROUND

16,885 SQ FT  
1,568.7 SQ M

### Key

- Office
- Reception
- Serviced offices
- Café/Events
- Core

Plan not to scale.  
For indicative purposes only.



BROOK GREEN

[BACK TO ELEVATION](#)





SPACE PLAN

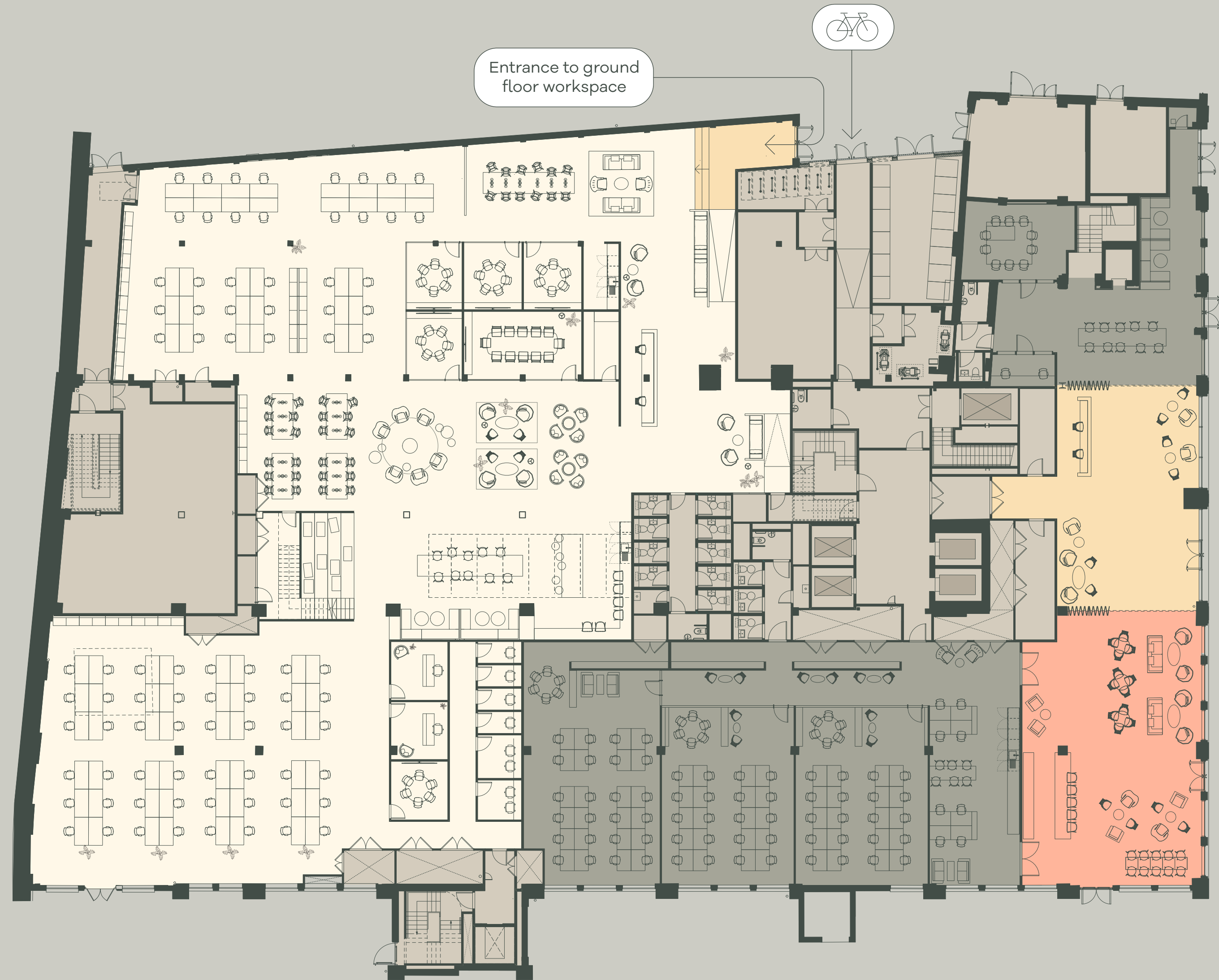
# GROUND

16,885 SQ FT  
1,568.7 SQ M

Key

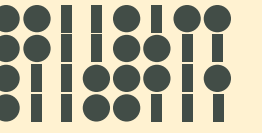
- Office
- Reception
- Serviced offices
- Café/Events
- Core

Plan not to scale.  
For indicative purposes only.



[BACK TO ELEVATION](#)





# FIRST

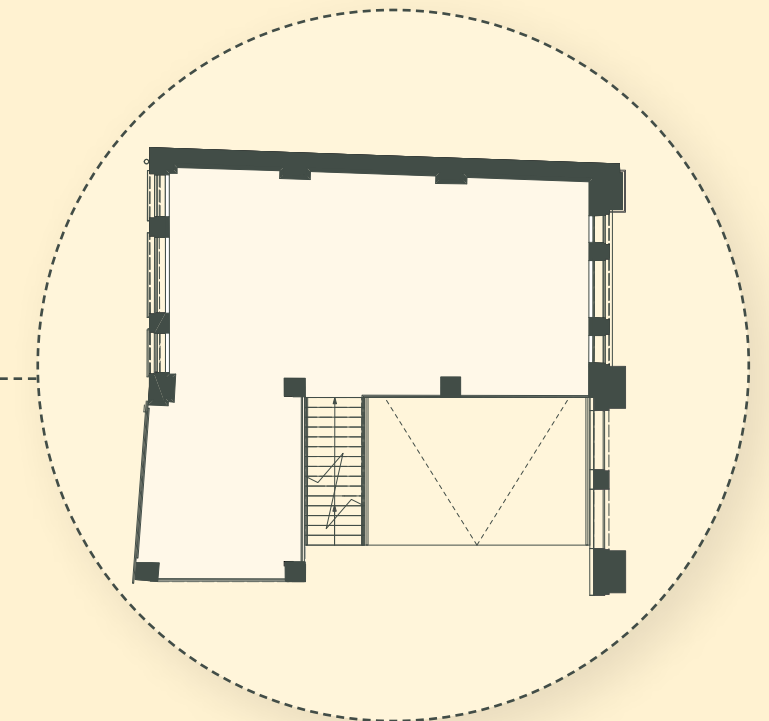
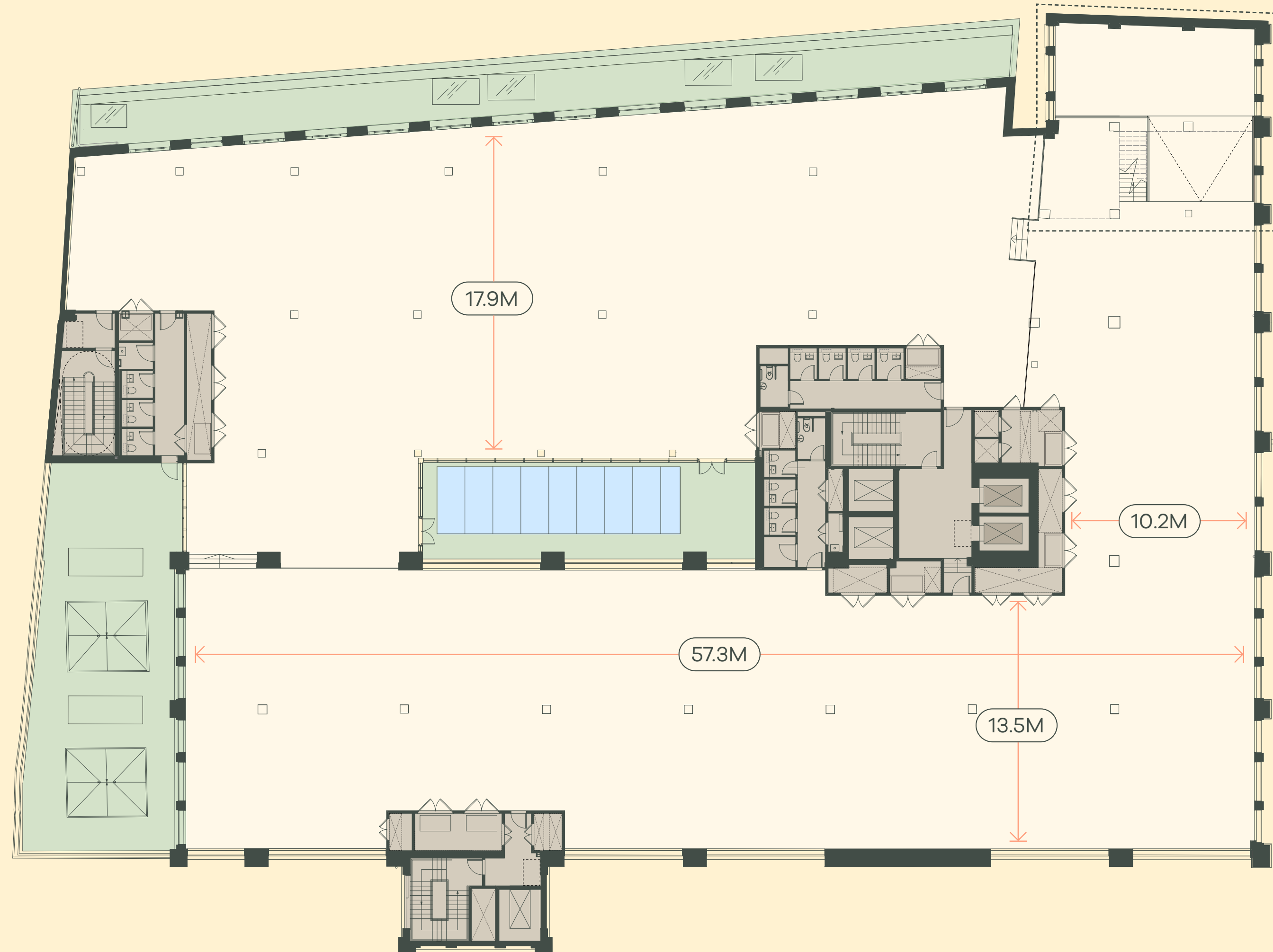
(WITH MEZZANINE)

21,583 SQ FT  
2,005.1 SQ M

### Key

- Office
- Core
- Green roof
- Atrium

Plan not to scale.  
For indicative purposes only.



MEZZANINE

BROOK GREEN

[BACK TO ELEVATION](#)





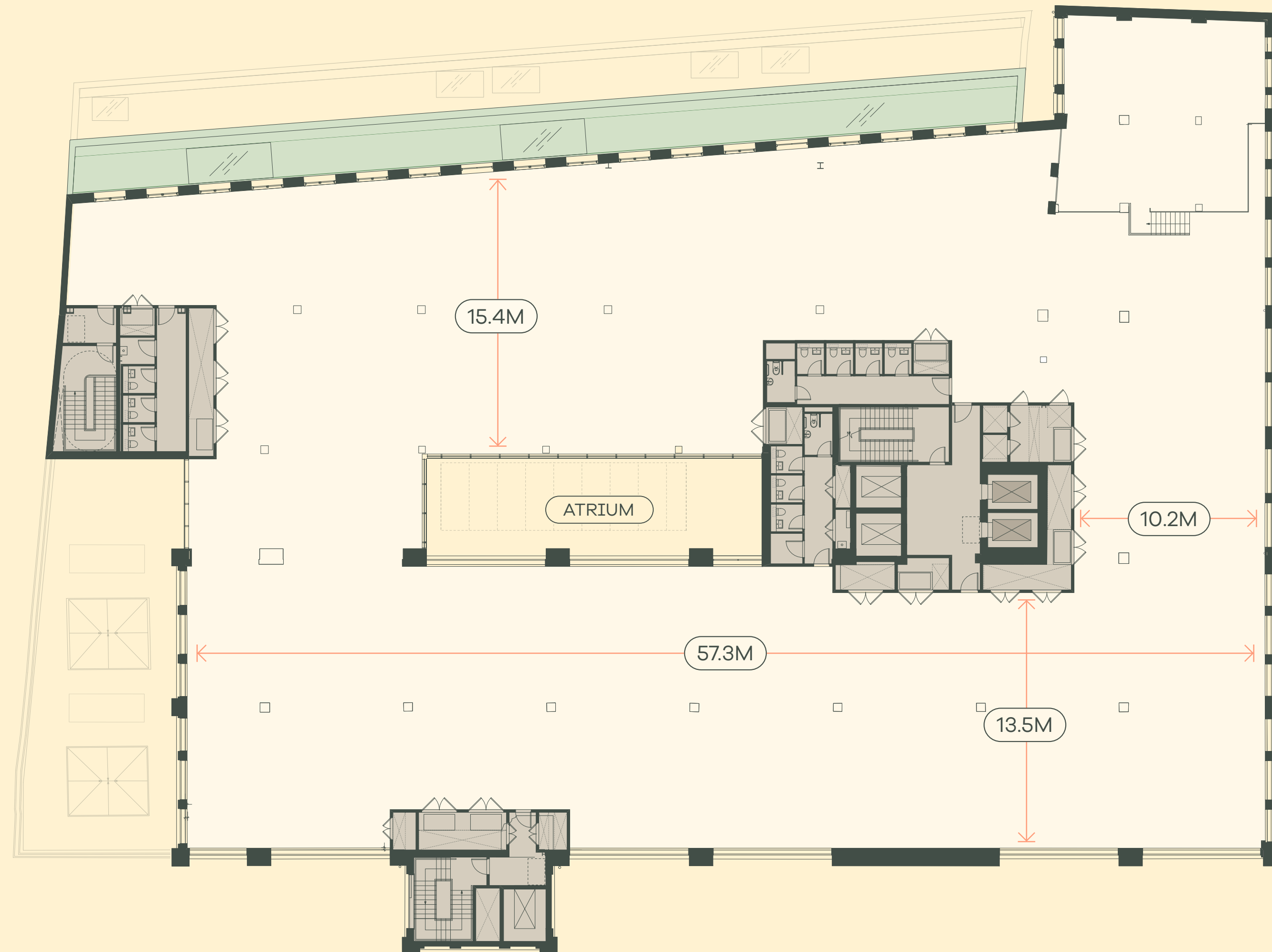
# SECOND

20,094 SQ FT  
1,866.8 SQ M

## Key

- Office
- Green roof
- Core

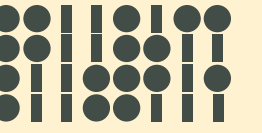
Plan not to scale.  
For indicative purposes only.



BROOK GREEN

[BACK TO ELEVATION](#)





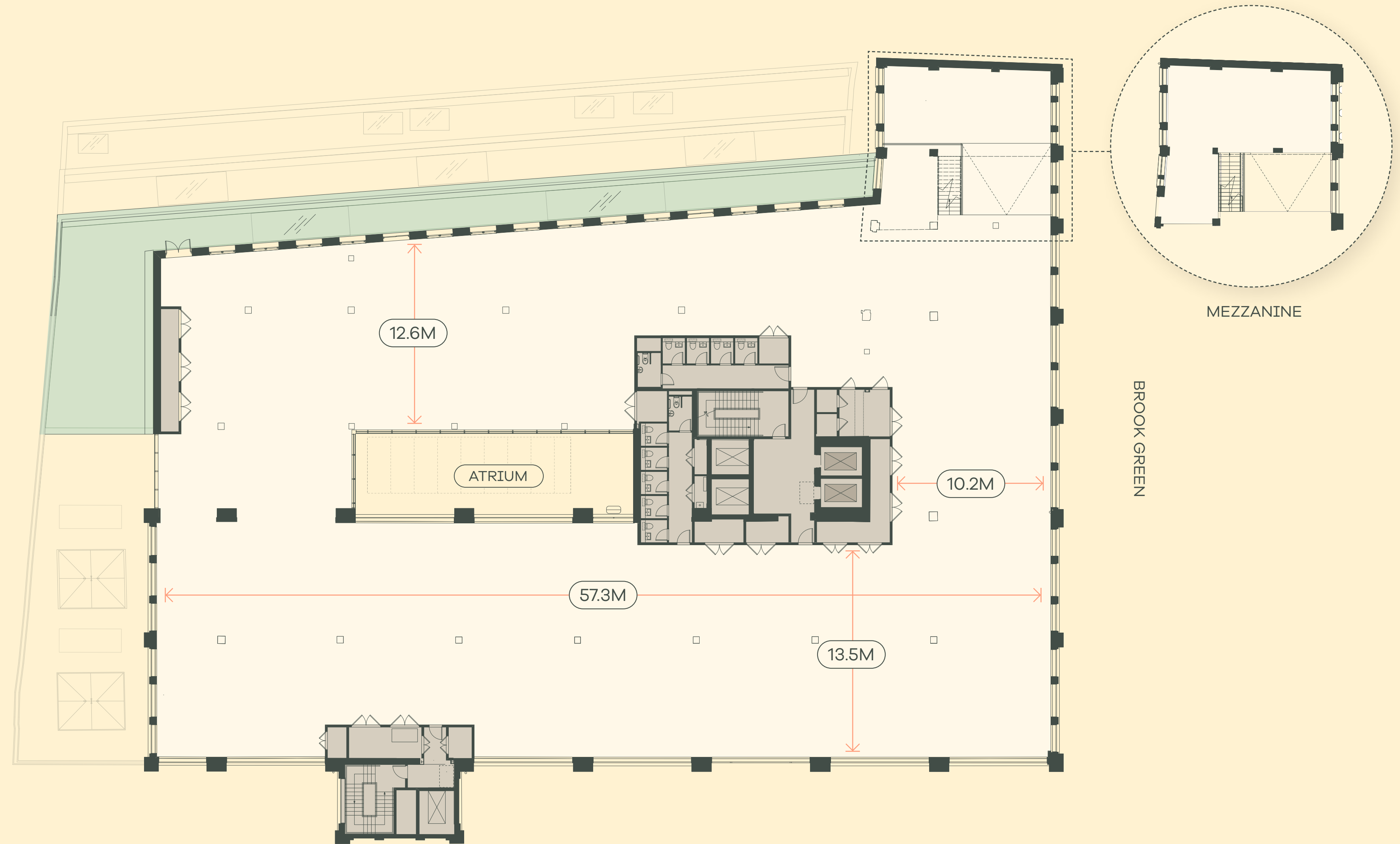
# THIRD

18,267 SQ FT  
1,697.1 SQ M

## Key

- Office
- Green roof
- Core

Plan not to scale.  
For indicative purposes only.



[BACK TO ELEVATION](#)





SPACE PLAN

# THIRD

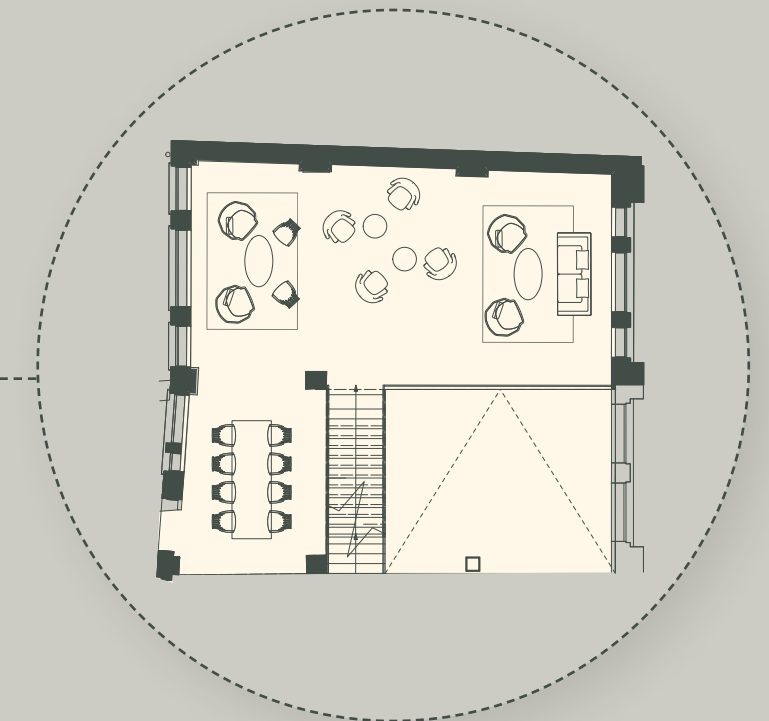
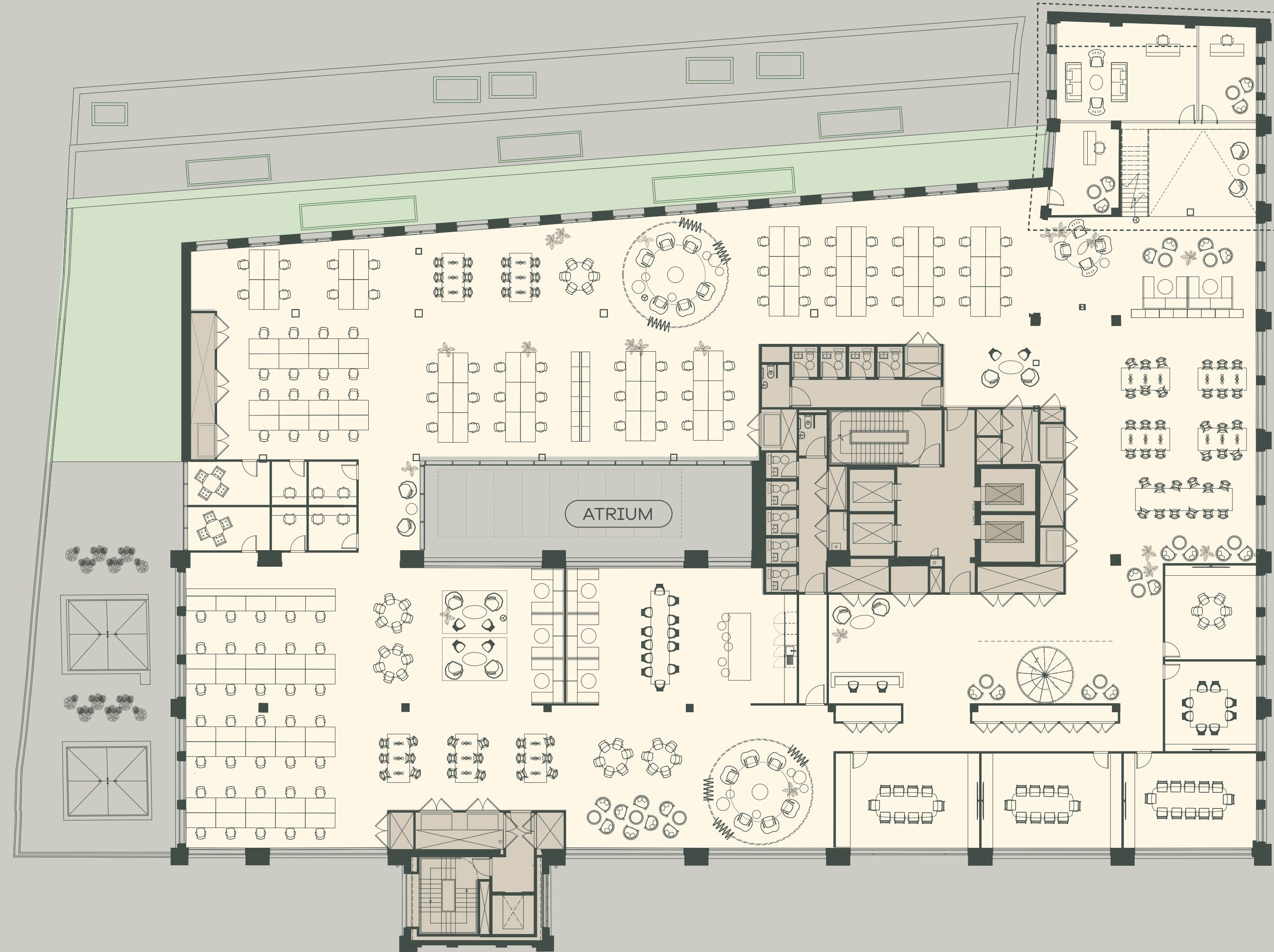
(WITH MEZZANINE)

18,267 SQ FT  
1,697.1 SQ M

Key

- Office
- Green roof
- Core

Plan not to scale.  
For indicative purposes only.



MEZZANINE

BROOK GREEN

[BACK TO ELEVATION](#)







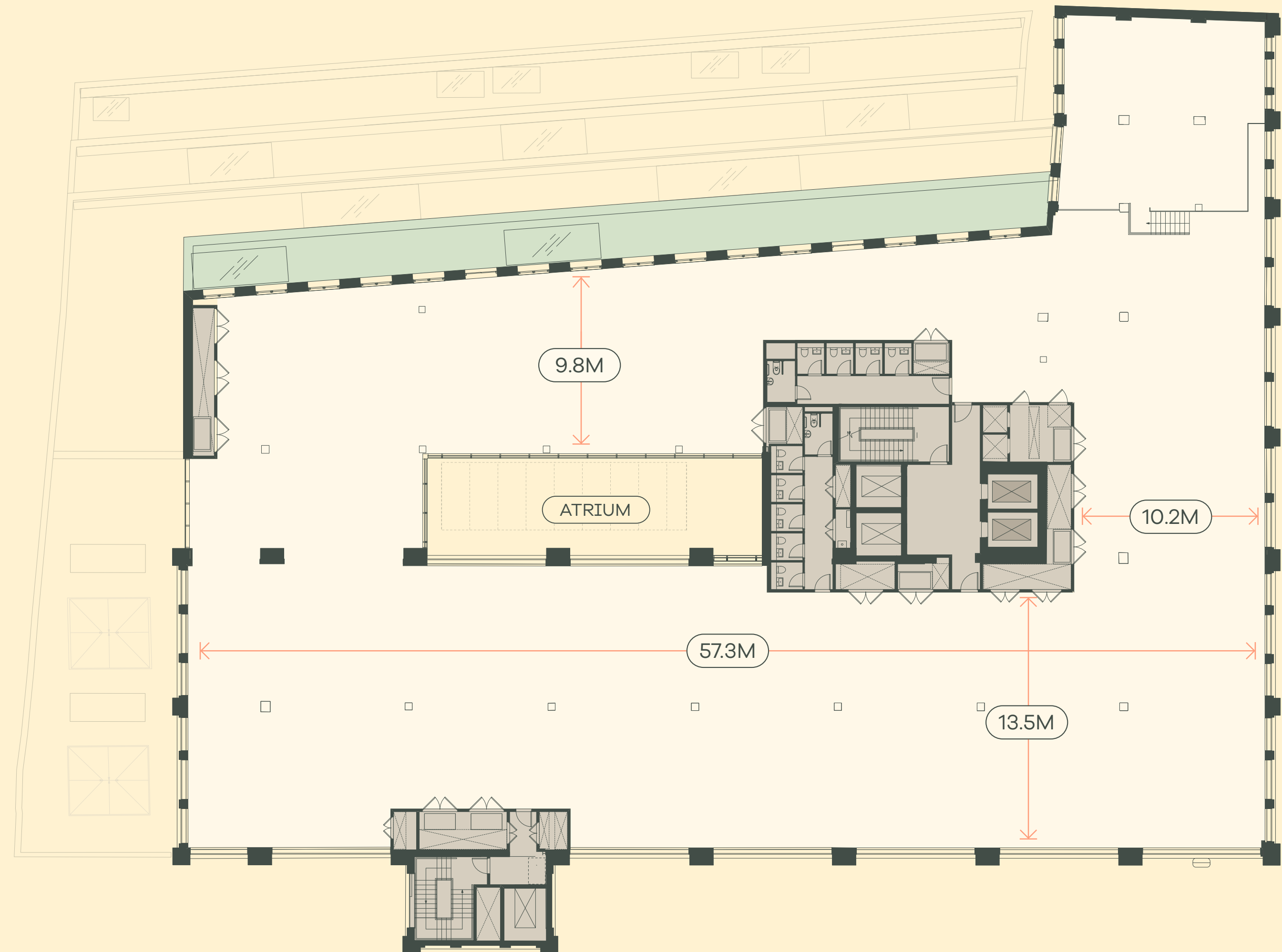
# FOURTH

16,885 SQ FT  
1,568.7 SQ M

## Key

- Office
- Green roof
- Core

Plan not to scale.  
For indicative purposes only.



[BACK TO ELEVATION](#)









# FIFTH

12,108 SQ FT  
1,124.9 SQ M

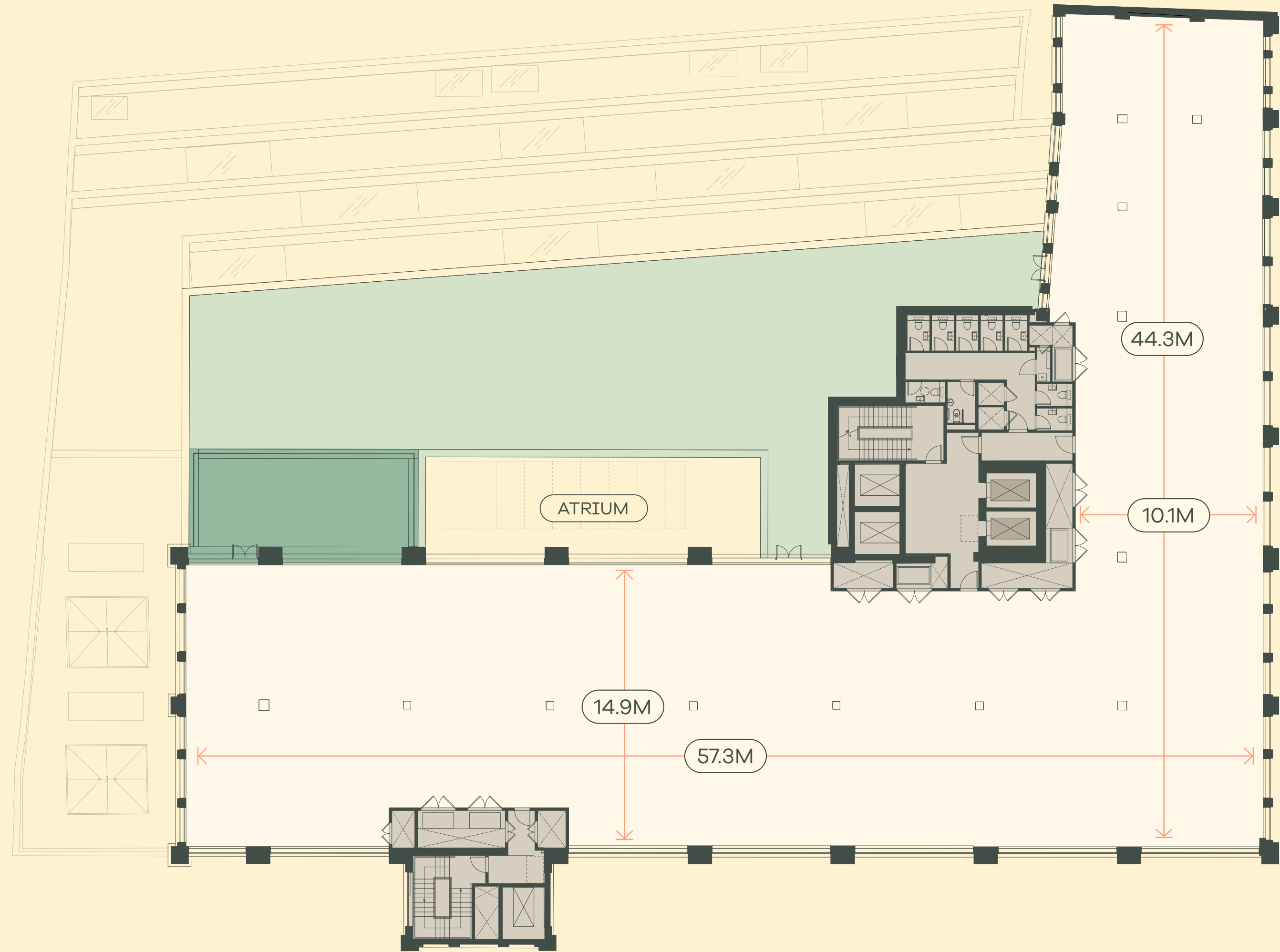
Terrace

 565 SQ FT

Key

-  Office
-  Terrace
-  Green roof
-  Core

Plan not to scale.  
For indicative purposes only.



[BACK TO ELEVATION](#)





SPACE PLAN





# FIFTH

12,108 SQ FT  
1,124.9 SQ M

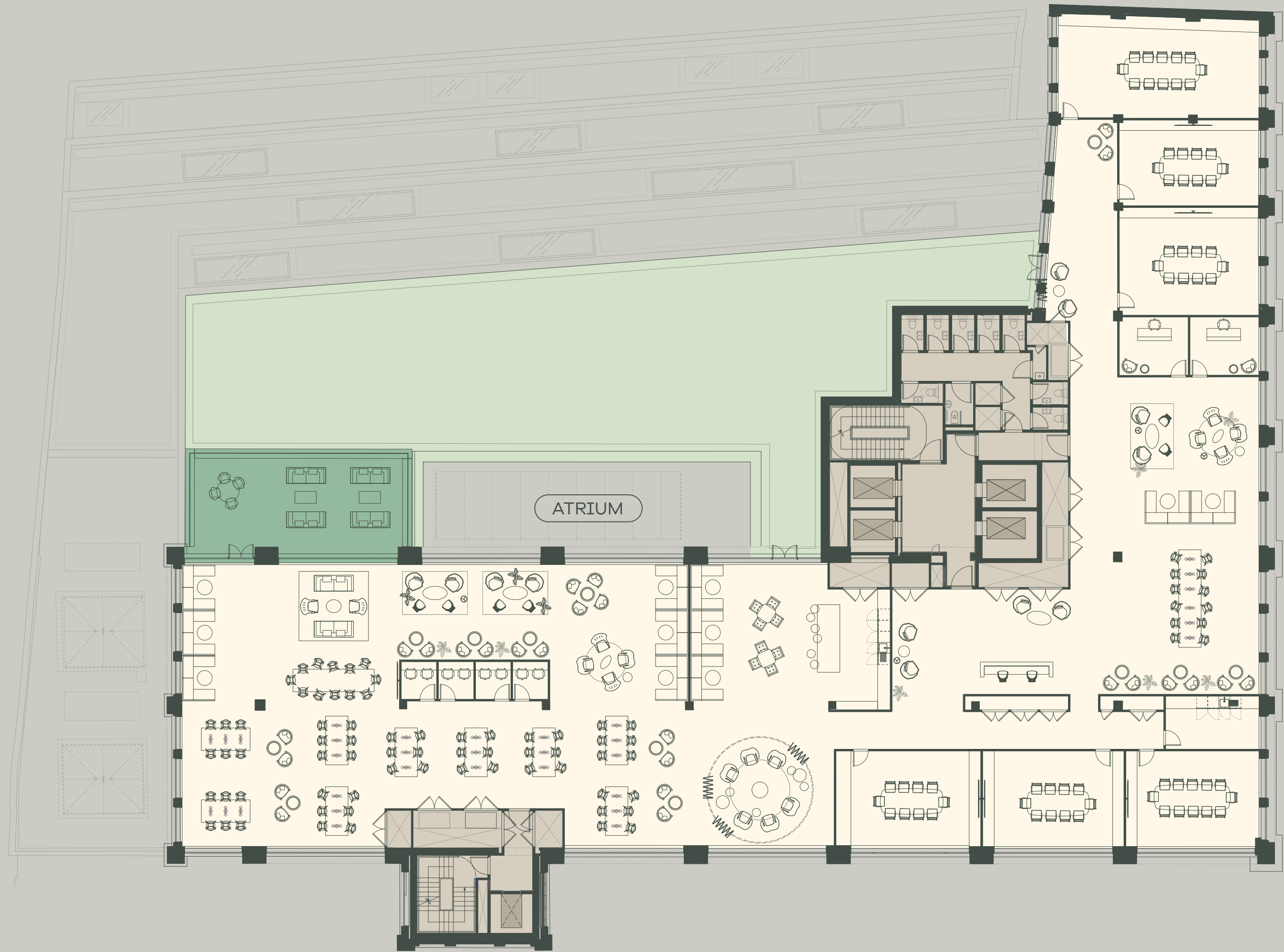
Terrace

 565 SQ FT

Key

-  Office
-  Roof terrace
-  Green roof
-  Core

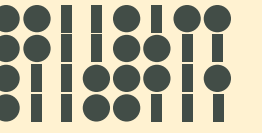
Plan not to scale.  
For indicative purposes only.



BROOK GREEN

[BACK TO ELEVATION](#)





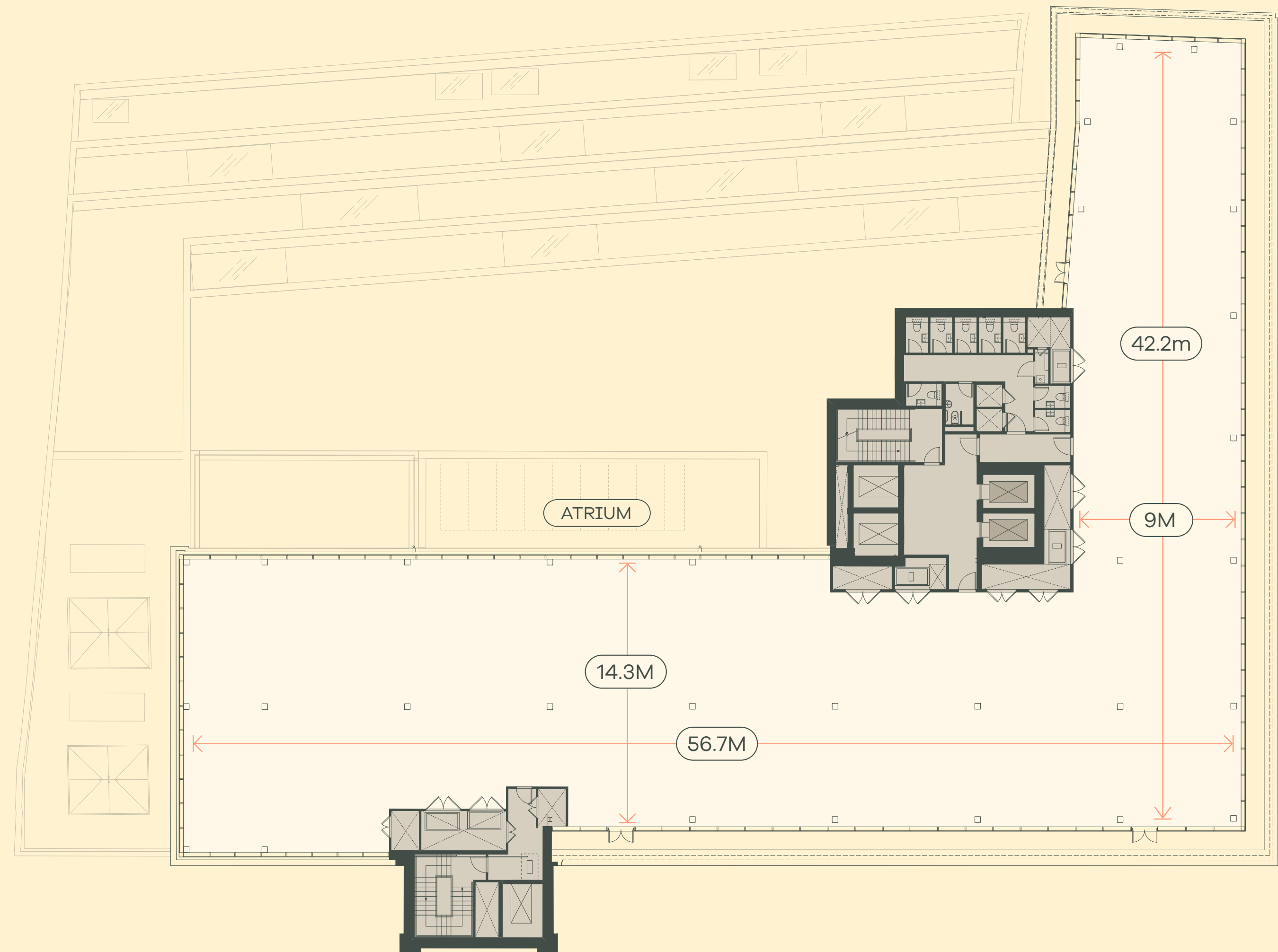
# SIXTH

11,115 SQ FT  
1,032.6 SQ M

## Key

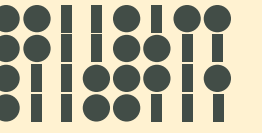
- Office
- Core

Plan not to scale.  
For indicative purposes only.



[BACK TO ELEVATION](#)





# PAVILION

(SEVENTH)

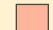




1,525 SQ FT

141.7 SQ M

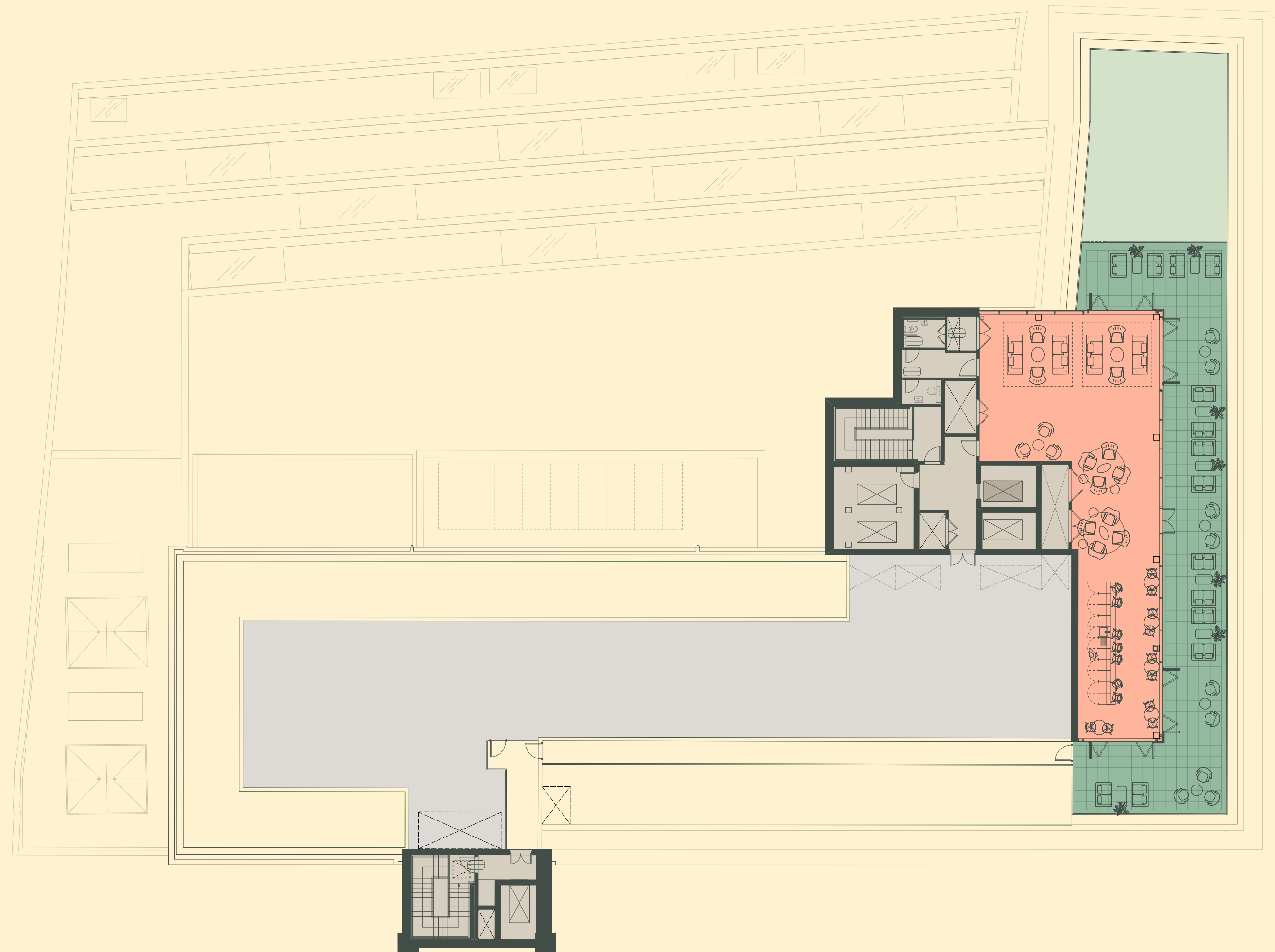
Terrace

 1,493 SQ FT

Key

-  Pavilion (amenity space)
-  Shared terrace
-  Green roof
-  Core
-  Plant

Plan not to scale.  
For indicative purposes only.



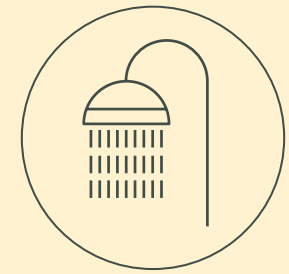
BROOK GREEN

[BACK TO ELEVATION](#)





# LOWER GROUND



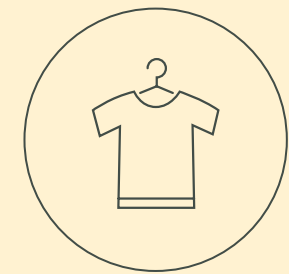
22 Showers



220 Cycle stands



1 cycle repair station

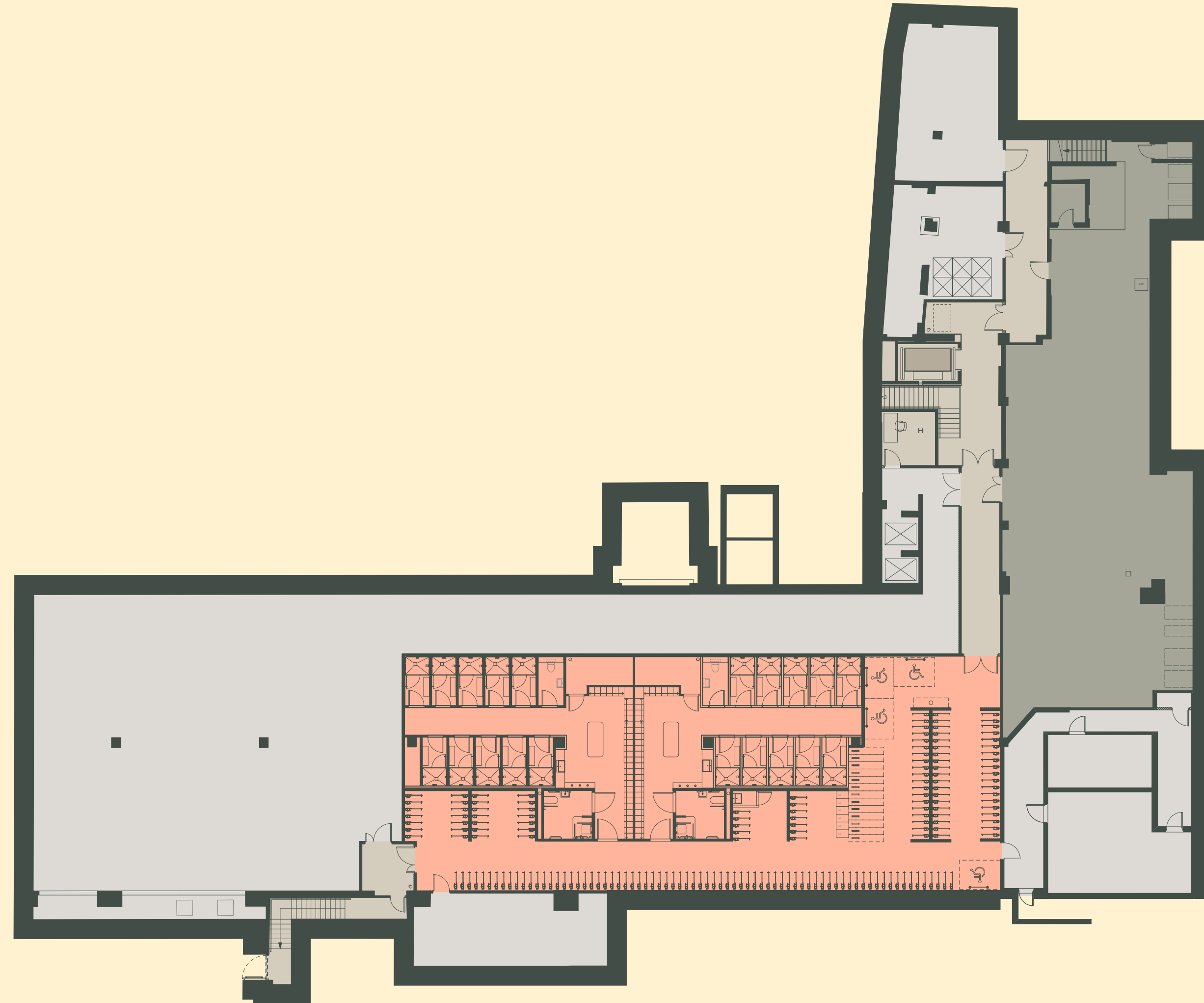


2 drying rooms

## Key

- End-of-trip amenity
- Serviced offices
- Core
- Plant

Plan not to scale.  
For indicative purposes only.



BROOK GREEN

[BACK TO ELEVATION](#)

